



**STUDENT EXPERIENCE
IS OUR BUSINESS**



**STUDENT EXPERIENCE
IS OUR BUSINESS**





VINAYAK BAIJU
DIRECTOR



ALEXANDRA OESTREICHER
VICE PRESIDENT



NELSON CHUKWUMA
CSI PRESIDENT



HAYDEN STEWART
ASSOCIATE VICE PRESIDENT (INTERNAL)



OLUSI DANIEL DERULO
DIRECTOR

WE REPRESENT THE VOICE AND INTEREST OF ALL CONESTOGA STUDENTS



SILVANUS FERNANDO
DIRECTOR



AMAL JEEVAN
DIRECTOR



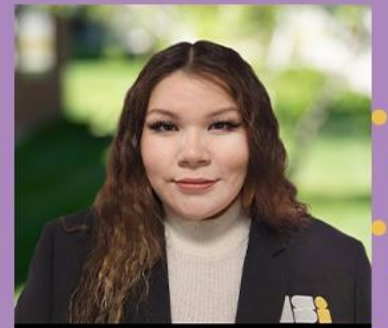
AMANDEEP SINGH SAINI
DIRECTOR



JANELLE GORDON
DIRECTOR



SHUBHAM SAVALIYA
DIRECTOR



BRANDI-RAE TIBISHKOIIG
INDIGENOUS DIRECTOR

GET INVOLVED WITH THE BOARD OF DIRECTORS



**ATTEND MONTHLY
BOARD MEETINGS**



RUN FOR THE BOARD



**ATTEND OUR ANNUAL
GENERAL MEETING**

ADVOCACY IS OUR BUSINESS



STUDENT HOUSING



TRANSIT SOLUTIONS



TRUTH & RECONCILIATION



FOOD SECURITY



FAIR TUITION



ACADEMIC FAIRNESS





MAKE YOUR STUDENT VOICE HEARD!



INDIGENOUS CIRCLE



FEEDBACK SURVEYS

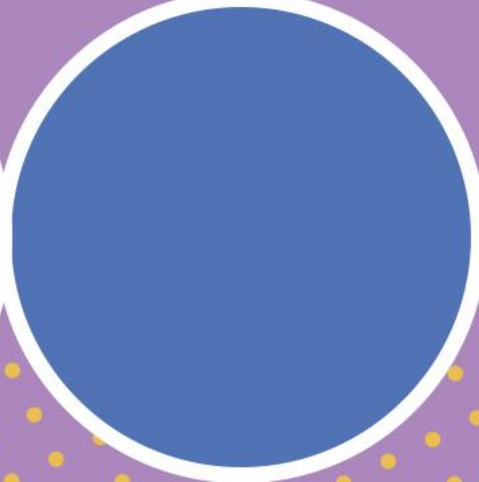
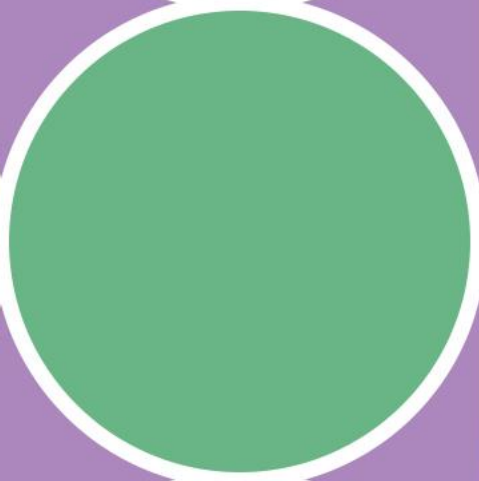
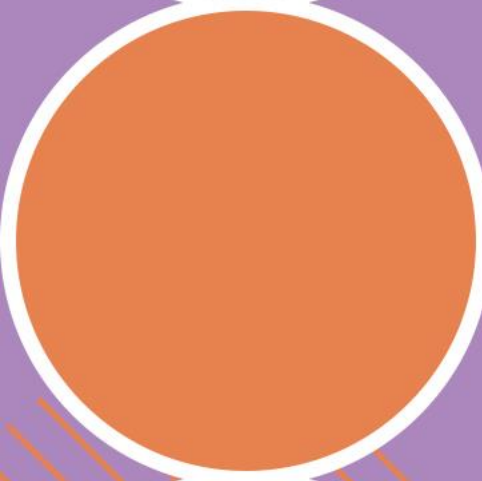
GET INVOLVED

- JOIN OR START A CSI CLUB

PERSONAL AND PROFESSIONAL DEVELOPMENT • EMPLOYMENT OPPORTUNITIES



APPLY FOR ALL THESE OPPORTUNITIES ONLINE
AT [CONESTUGASTUDENTS.COM](https://conestugastudents.com)



SERVICES ARE OUR BUSINESS



GAMING LOUNGES



SPIRITUAL ROOMS



SCHOLARSHIPS



SHUTTLE



CSI'S LEND PROGRAM

Oh no! Forgot your equipment for class? We've got you covered! Swing by one of our Hubs to borrow campus-specific items that can support your studies!



Check out our website for more information!

CSI EVENTS

**WORKSHOPS,
PUB NIGHTS,
LIVE ENTERTAINMENT**

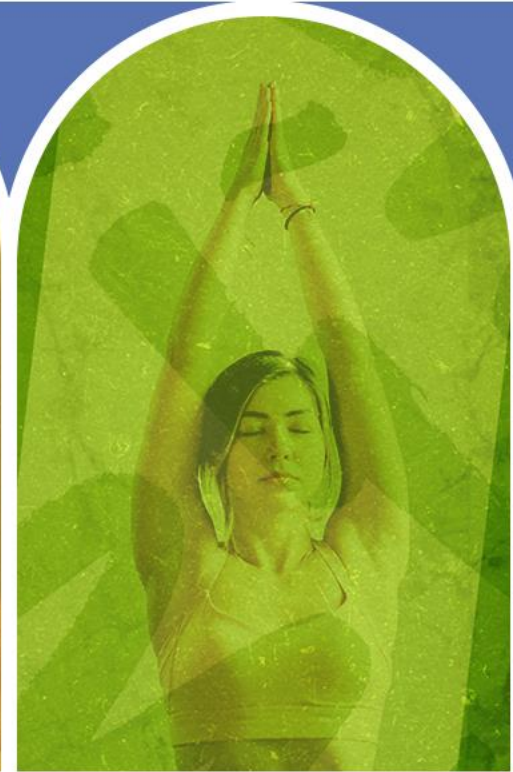




COLLAB WEEKS



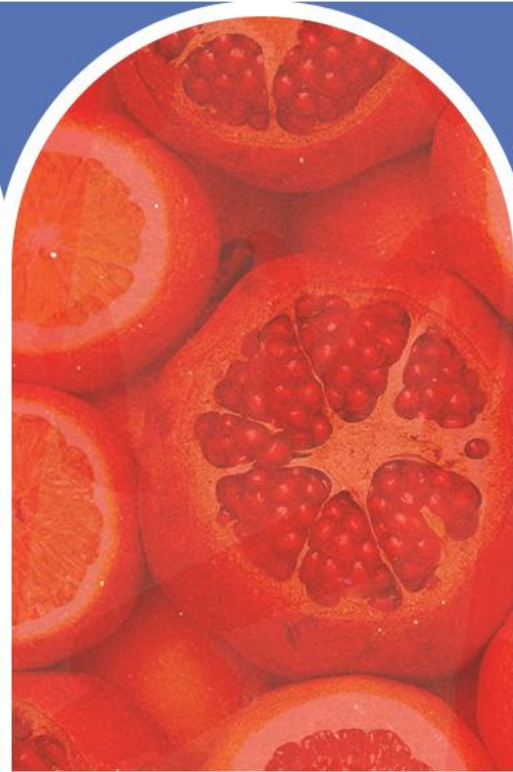
**CAREER
READINESS**



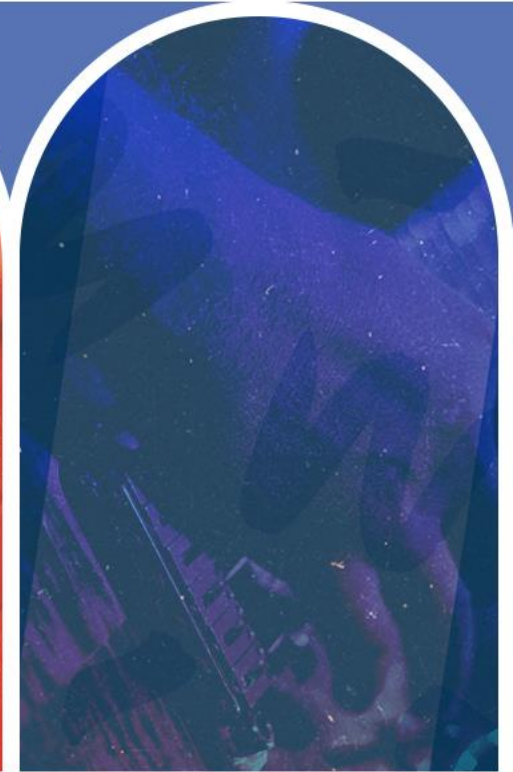
**HEALTH
& WELLNESS**



**CELEBRATING
DIVERSITY**



**SEXUAL
HEALTH**



**EXAM &
STRESS RELIEF**



THE
**REUTER
MARKET**
EST. 2022

THE
PARKHILL
EST. CAFÉ 2024

Pita Pit

THE
FOOD TRUCK
EST. 2021

HEALTH PLANS

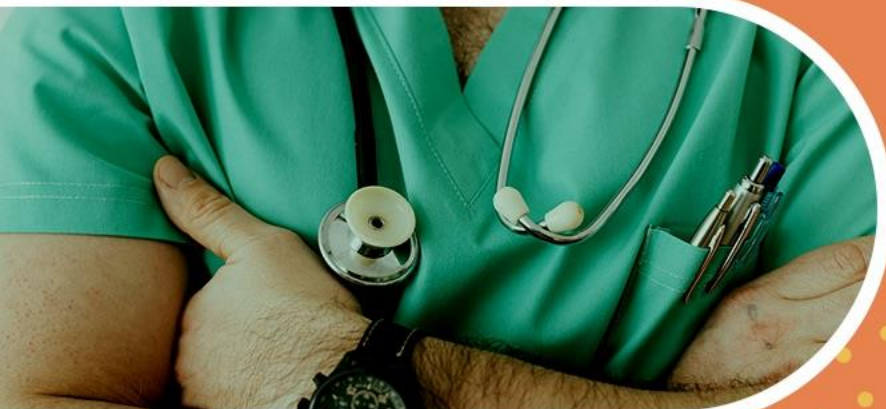
**EXTENDED HEALTH AND DENTAL PLAN
(AVAILABLE FOR ALL STUDENTS)**

**CIHIP
(AVAILABLE FOR
INTERNATIONAL STUDENTS)**



COLLEGE INTERNATIONAL HEALTH INSURANCE PLAN (CIHIP)

ALL FULL-TIME (NON EAS) INTERNATIONAL STUDENTS ARE COVERED UNDER THE COLLEGE INTERNATIONAL HEALTH INSURANCE PLAN PROVIDED BY STUDENTCARE. CIHIP OFFERS COMPREHENSIVE INSURANCE FOR BASIC EMERGENCY HEALTHCARE SERVICES THAT MAY BE DIFFICULT TO AFFORD OUTSIDE YOUR HOME COUNTRY.



SERVICES COVERED UNDER THIS PLAN
INCLUDE:

- ✓ DOCTOR/HOSPITAL VISITS
- ✓ EXAMINATIONS
- ✓ LAB WORK
- ✓ EMERGENCY SERVICES

Dialogue



STUDENTCARE

**CONESTOGA STUDENTS CAN
DOWNLOAD THE DIALOGUE APP TO CONNECT
WITH A TEAM OF PROFESSIONALS WITHIN MINUTES.**

-  **CONNECT VIRTUALLY WITH NURSES AND PHYSICIANS
VIA MOBILE OR WEB APP FREE OF CHARGE!**
-  **CONVENIENT ACCESS TO CARE WHEN AND
WHERE YOU NEED IT.**
-  **NAVIGATE THE HEALTHCARE SYSTEM WITH OUR HELP.**



**THE
WELLNESS
OFFICE
AT CONESTOGA COLLEGE**

**CHIROPRACTIC CARE, MASSAGE THERAPY,
AND PHYSIOTHERAPY**

BOOK YOUR APPOINTMENT TODAY!



519-748-5131 x3585

CSIHEALTHPLAN@CONESTOGAC.ON.CA

**LOCATED AT DOON CAMPUS | ROOM RC173
IN THE RECREATION CENTRE**

LIVE CHAT @ CONESTOGASTUDENTS.COM

LEGAL PROTECTION PROGRAM

NEED LEGAL ASSISTANCE WITH PROCEEDINGS
RELATED TO HOUSING, EMPLOYMENT, OR ACADEMICS?
THE LEGAL PROTECTION PROGRAM IS HERE FOR YOU!

LEGAL ASSISTANCE CAN
BE REACHED THROUGH

STUDENTCARE.CA



STUDENTCARE



KEEP UP TO DATE WITH ALL THINGS CSI



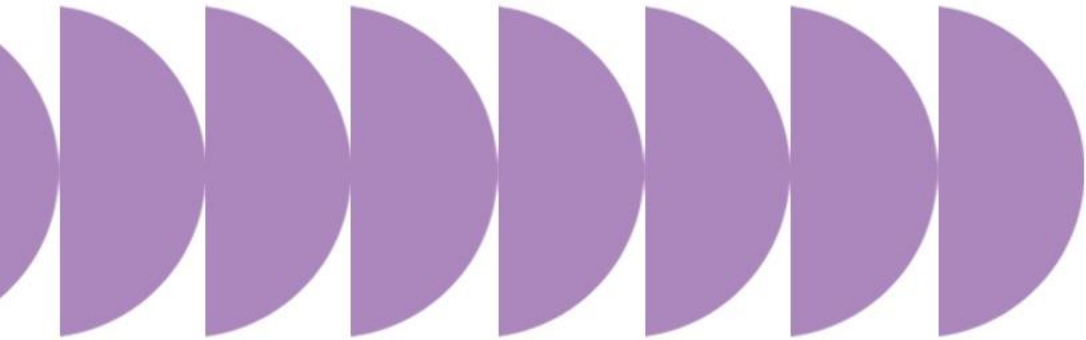
FOLLOW OUR SOCIAL CHANNELS



CHECK OUT OUR WEBSITE



VISIT OUR WEBSITE FOR MORE INFORMATION





THANK YOU!